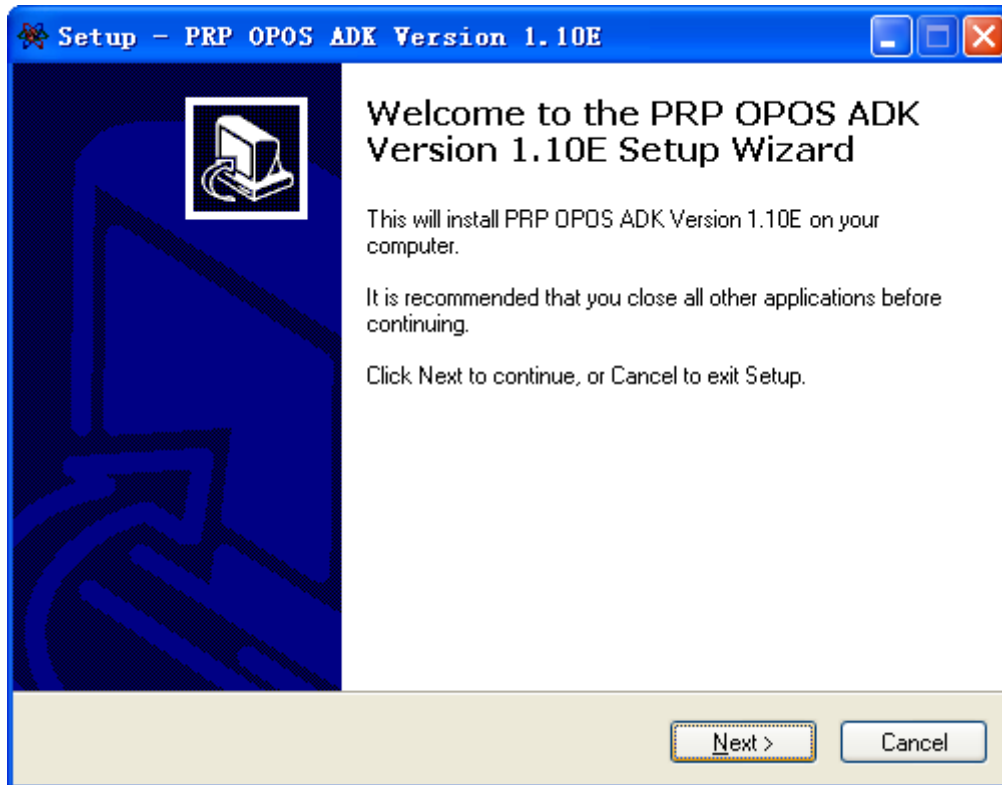
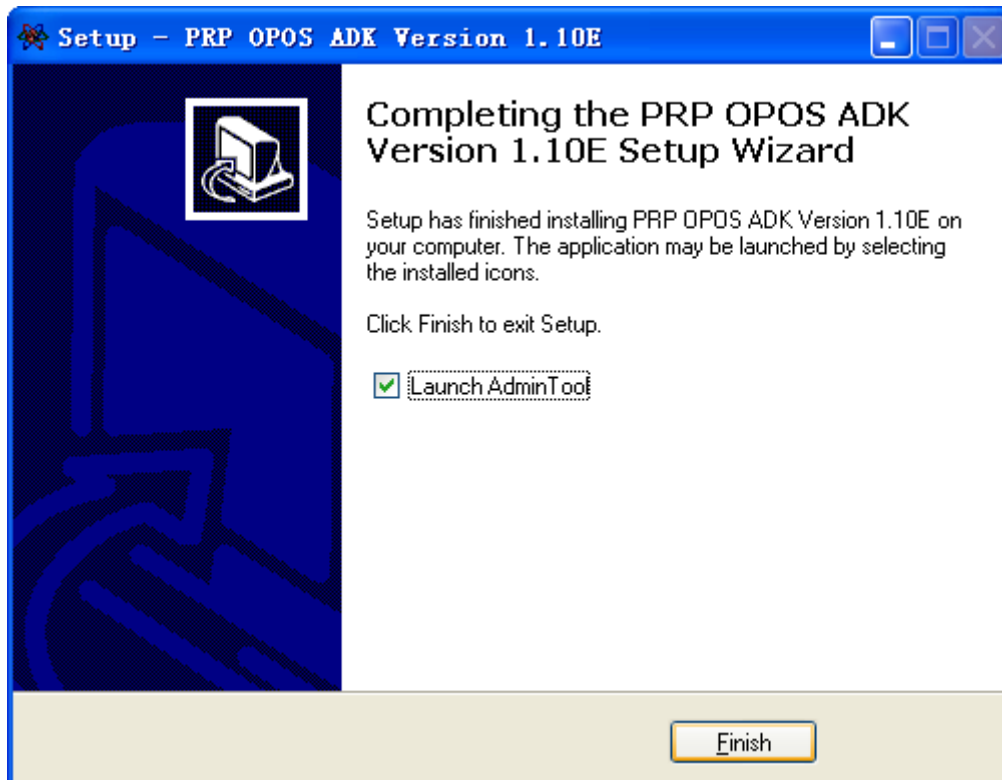


PRP OPOS User's Manual

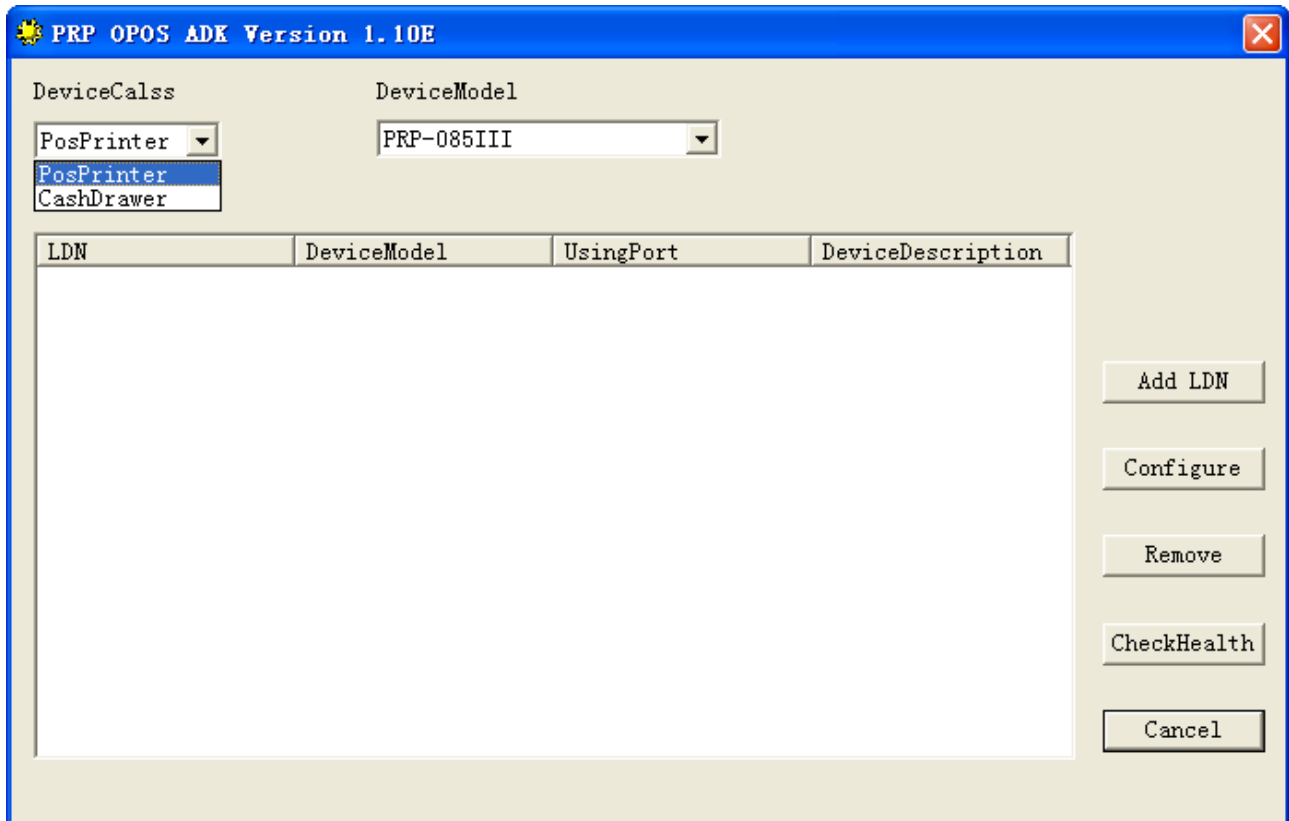
- 1、 Install the PRP OPOS ADK by running SETUP.EXE



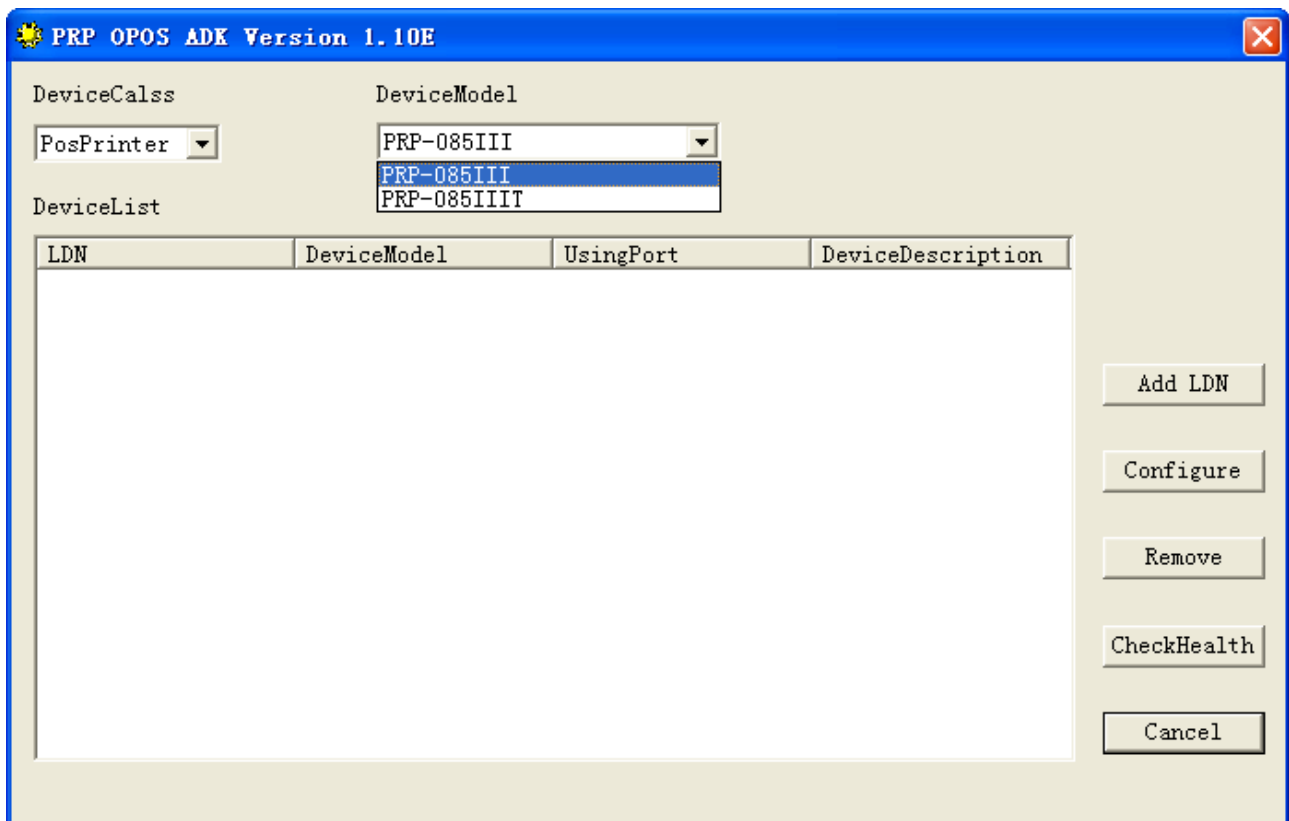
- 2、 Setup has completed as shown below



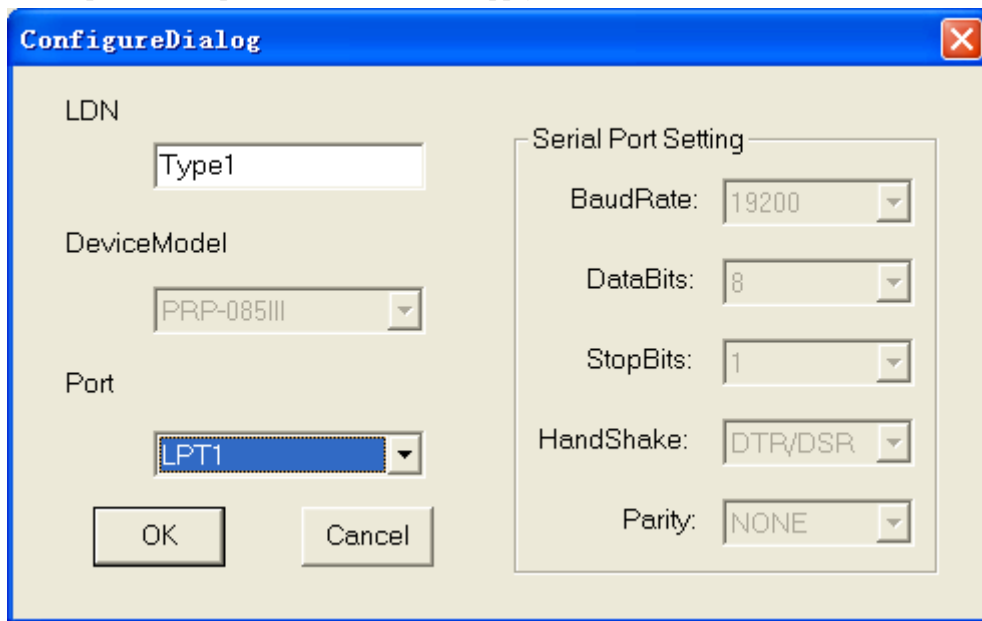
3、 Run AdminTool.exe to configure the PRP OPOS



4、 Select “PosPrinter” as “DeviceClass” and select “PRP-085III” or “PRP-085IIIT” as “DeviceModel”, the setting is as shown below

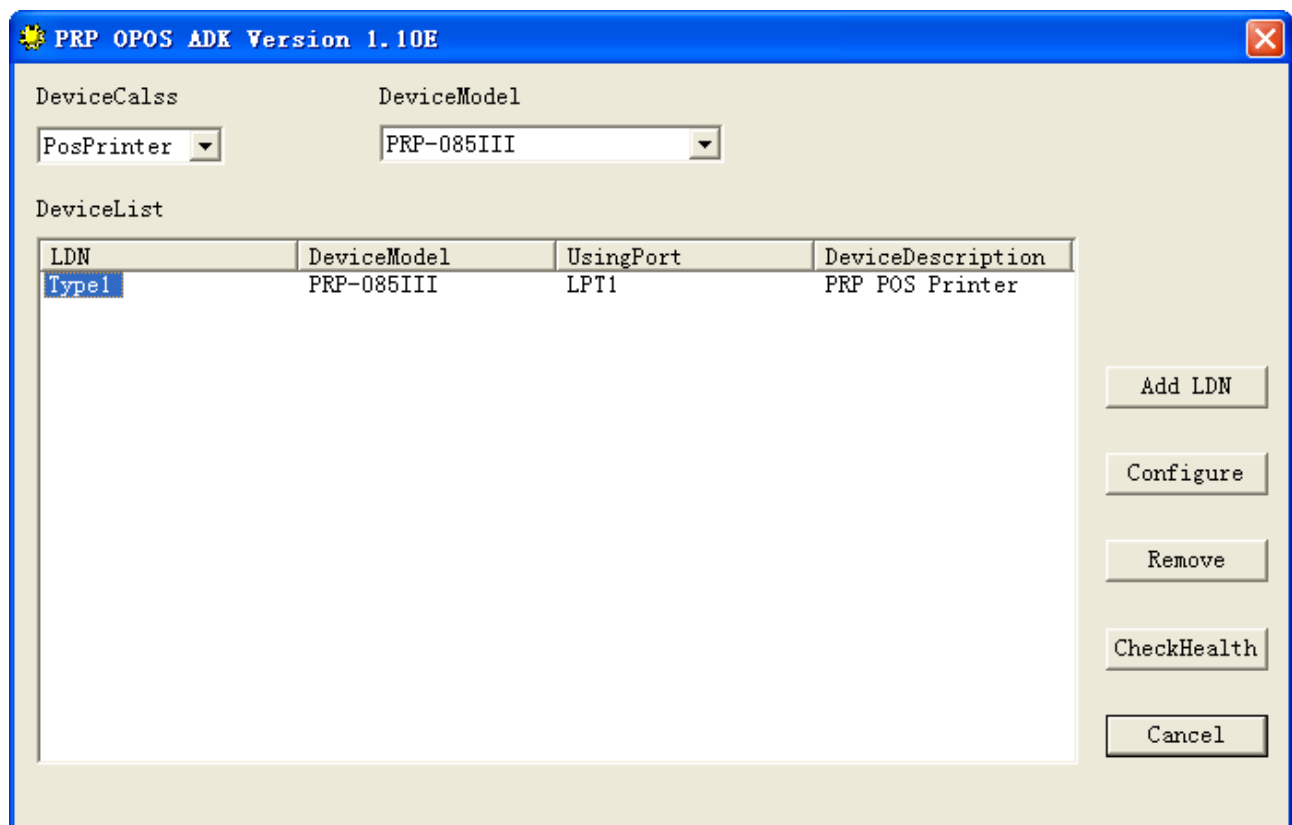


- 5、 Click the “Add LDN” button, in the shown window fill in a new Logic Device Name (LDN), and select a communication port for the printer. Click “OK” to apply.



The **ConfigureDialog** window is used for configuring a Logic Device Name (LDN) and its serial port settings. It contains the following fields and controls:

- LDN:** A text input field containing "Type1".
- DeviceModel:** A dropdown menu showing "PRP-085III".
- Port:** A dropdown menu showing "LPT1".
- Serial Port Setting:** A group box containing:
 - BaudRate:** A dropdown menu showing "19200".
 - DataBits:** A dropdown menu showing "8".
 - StopBits:** A dropdown menu showing "1".
 - HandShake:** A dropdown menu showing "DTR/DSR".
 - Parity:** A dropdown menu showing "NONE".
- Buttons:** "OK" and "Cancel" buttons at the bottom left.

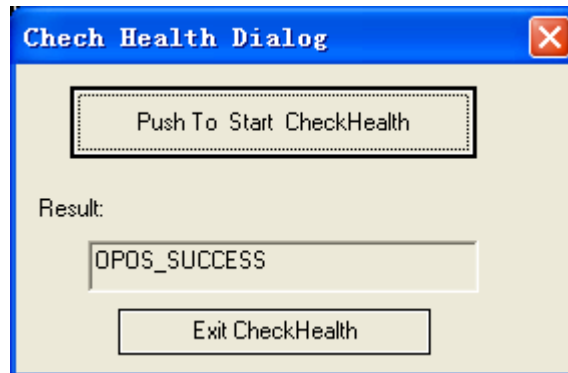


The **PRP OPOS ADK Version 1.10E** window displays a list of configured devices and provides controls for managing them. It includes the following elements:

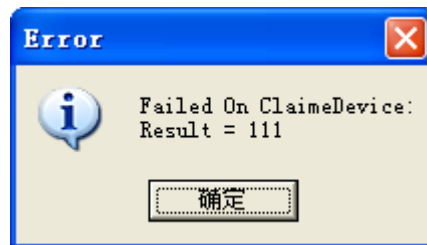
- DeviceCalss:** A dropdown menu showing "PosPrinter".
- DeviceModel:** A dropdown menu showing "PRP-085III".
- DeviceList:** A table listing the configured devices.
- Buttons:** "Add LDN", "Configure", "Remove", "CheckHealth", and "Cancel" buttons on the right side.

LDN	DeviceModel	UsingPort	DeviceDescription
Type1	PRP-085III	LPT1	PRP POS Printer

- 6、 Select “Unit1” in the Device List and click “Check Health” to test the printer configuration and connection. If the printer configured well and connected successfully, “OPOS_SUCCESS” will be shown in the testing result.



If the printer configured wrong or connected unsuccessfully, an Error window will be shown. Please reconfigure and reconnect the printer.



- 7、 **Note:** Before using the PRP OPOS, please be sure that there is no other OPOS software or LDN for other printer models to avoid confliction of the printer port and LDN. In the mean time, please be sure that there is no other application (including driver application) use the same communication port as OPOS software does, otherwise, communication failure will be happened.

2007-08-01